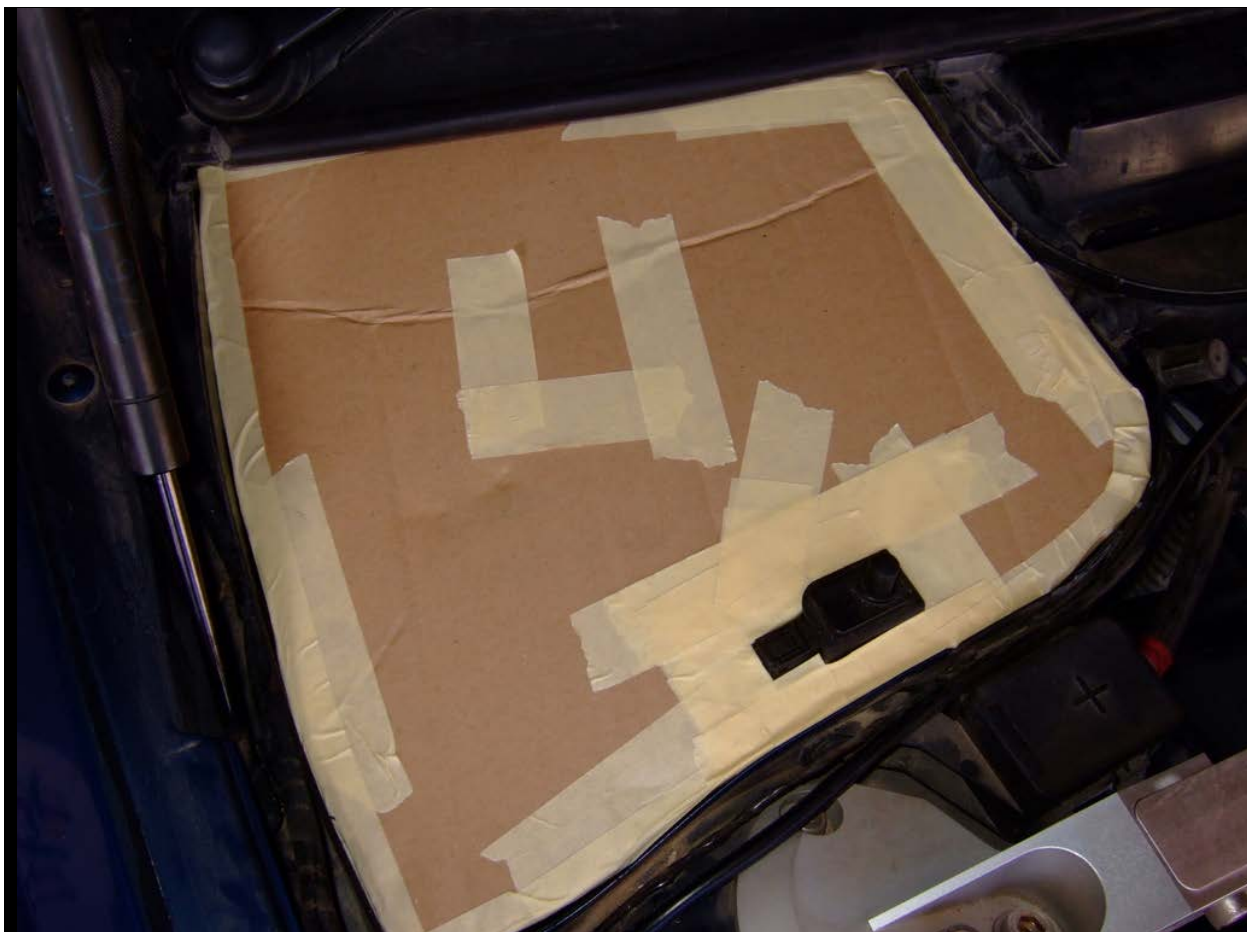


Dual Engine Covers Construction

This is my DIY for fabricating 2 engine bay covers: 1 for the left and one for the right side. This mod is done for pure aesthetic reasons. No functionality at all.

Using cardboard to make a rough shape





Tricky area around alarm hood switch



ECU side cover is more complex in shape and needs bending as well







The initial template. I made it a bit larger so that I can shave whatever material I want later on for better fit.



Transferred the cardboard templates to acrylic sheet, 2mm. It's easier to work on the edges and more fine tuning is possible.



Blue triangle marks the area where bending should take place



5mm aluminum sheet as the final material for the cover.



Using a jigsaw and a file, I got it to the proper shape:



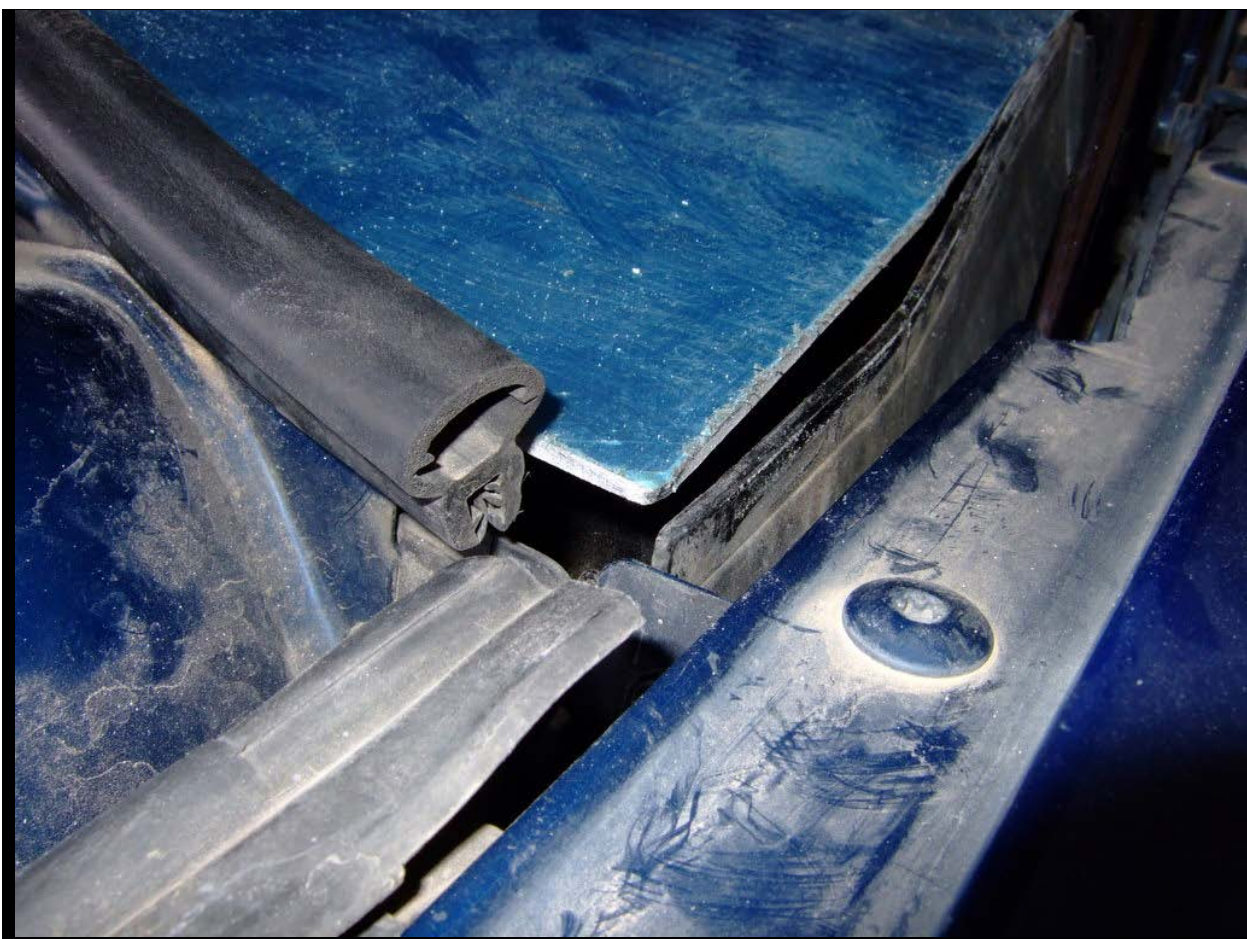
Test fitting and filling wherever needed



Once the metal bends this gap will not longer exist







Bend #1









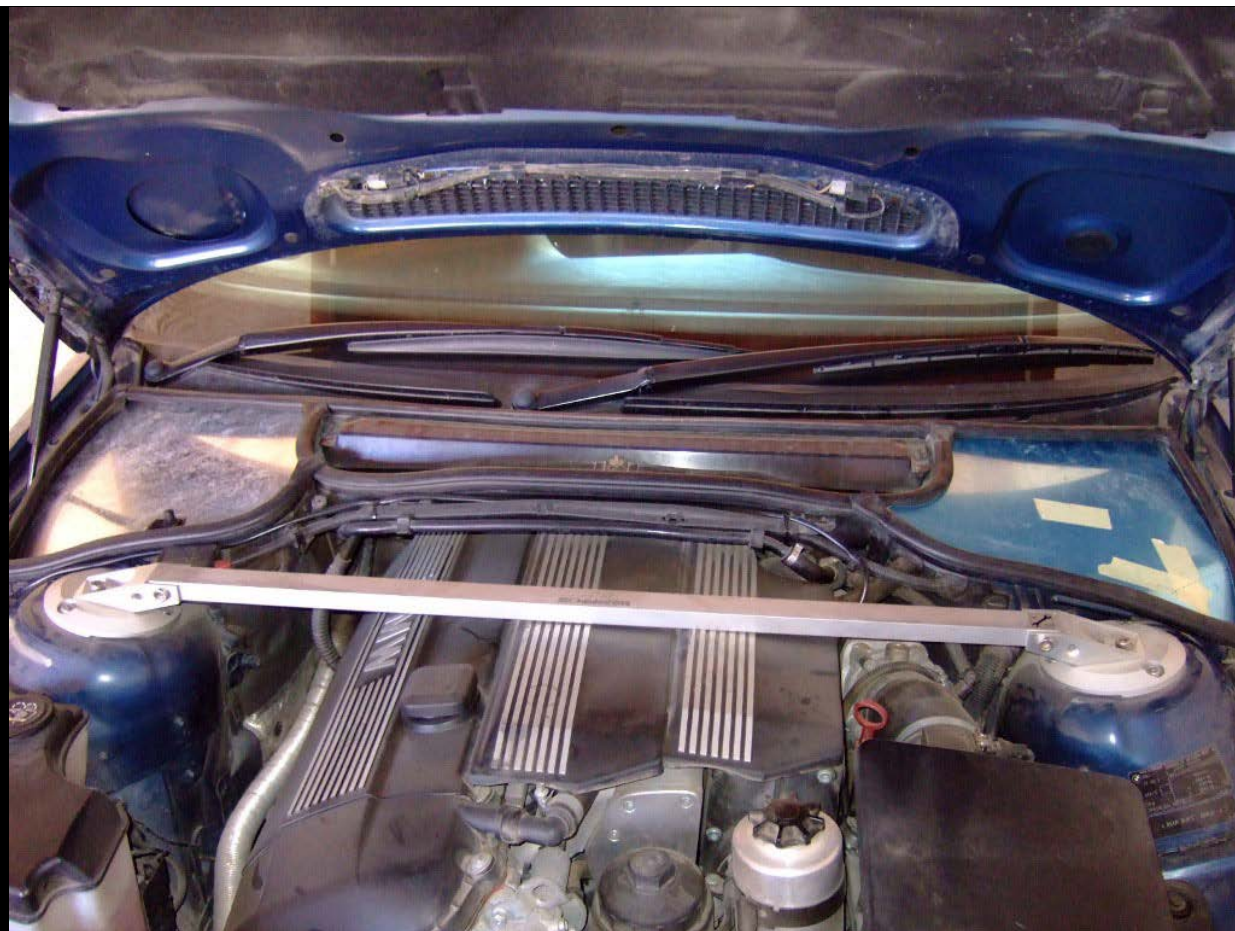
Bend #2







Final adjustments with the rubber strip in place



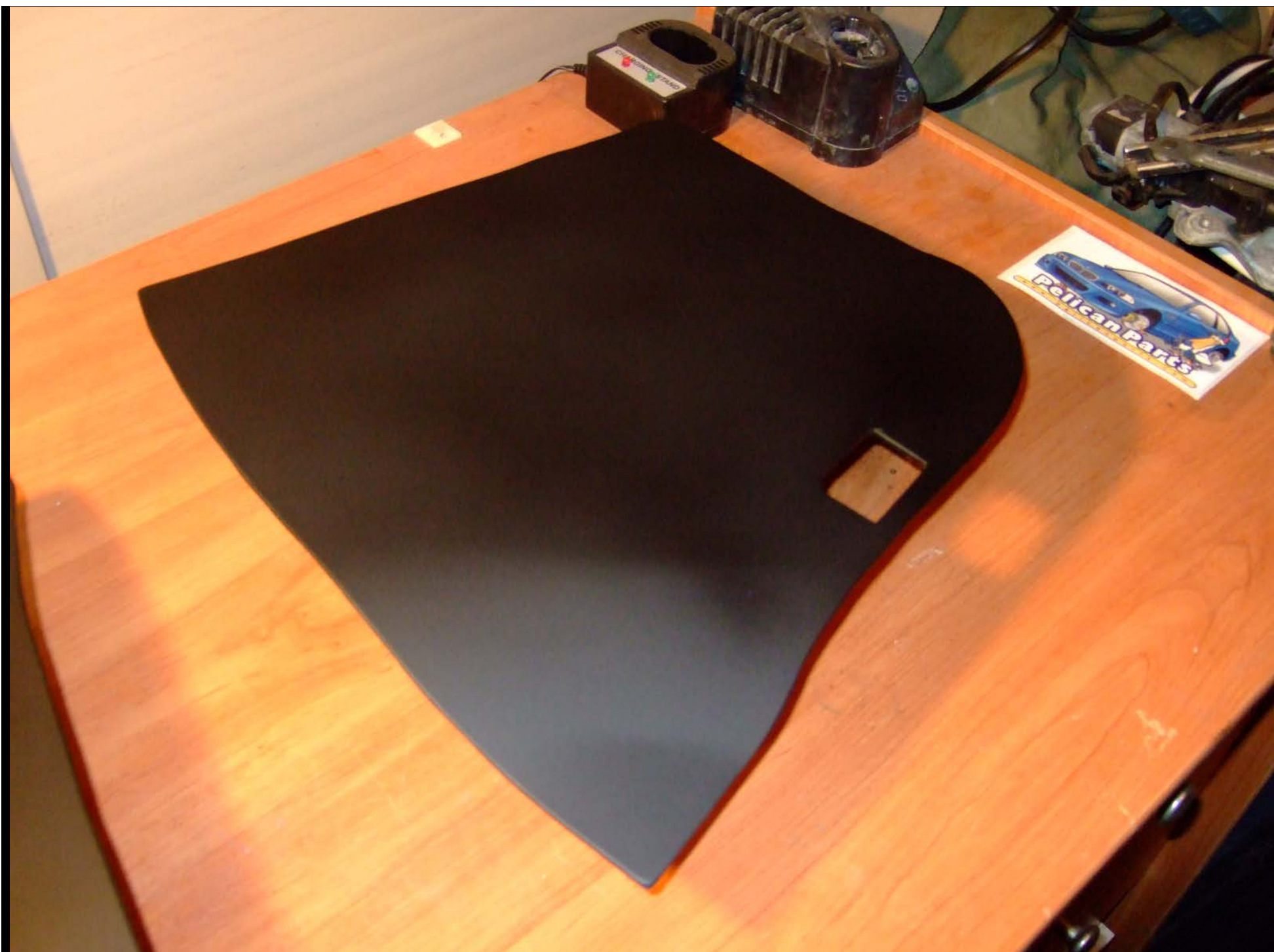
Painting matte black with high-temp spray paint











Installed!!!!





