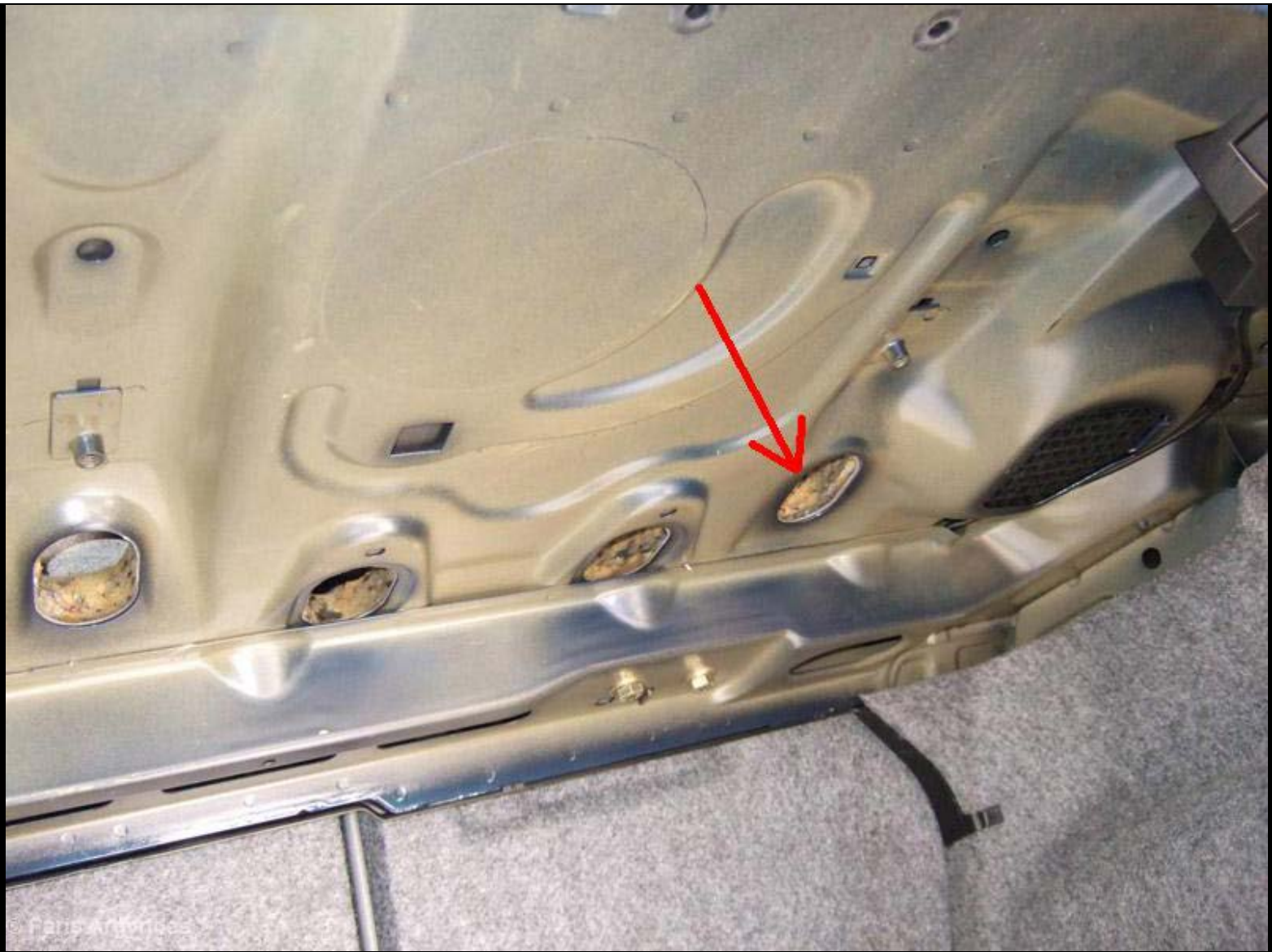


Parcel Shelf (Rear) Rattle Fix

Below parcel shelf (view from trunk). Watch the oval holes!



© Paris Argyrides



Bought a pack of 3 tennis balls. Made by Dunlop to have a match with my tires ;)



© Paris Argyrides

The Fix:



© Paris Argyrides

Make a puncture on all 3 balls with a screw driver to release some air else it's impossible to get into the trunk holes



© Paris Argyrides

Take a screw driver and push the ball in the trunk, between metal and upper parcel shelf. Needs some strength and to be in a bit weird position in the trunk.



© Paris Argyrides



Ball inside! Push it towards the rear of the car, around 15cm from the hole



Repeat the same for the remaining 2 holes. The tennis balls push the plastic parcel shelf against the metal eliminating any noise and vibrations.

Done.